

The NeXt Generation

In monitoring your Wastewater Treatment System



Communication and control with the knowledge of how your wastewater treatment system is performing and operating in today's environment has become an increasingly important part of most wastewater treatment systems. With the use of today's new micro monitoring systems in combination with specialized sensors, Tipton Environmental a leader in this new technology. With the invention of the fluoroprobes and other sensors the process of monitoring of a wastewater treatment system becomes easy. Our wealth of experience and knowledge of wastewater treatment in combination with this new technology has allowed our company to build the best monitoring system in the industry for these applications.

Setting up your new monitoring system for your wastewater treatment business can be simple for either your existing or new wastewater treatment systems. Please contact us so that we can help you get started.



Perfecting the interaction of Probes and Monitoring Systems

The WWTP Water Explorer is a specialized program with the ability of controlling and monitoring wastewater treatment facilities. We have configured the Water Explorer systems using our own and other standards, field proven hardware and software so that the wastewater treatment plant operator will not need to write new interfaces for his equipment. We have designed our systems in combination with specific probes and hardware working in conjunction with the software which we provide. Documentation and reports are easily obtainable through the Windows based software. Our systems have been designed to monitor those functions of your wastewater treatment system to establish a broad outline of how the system is operating.

Features

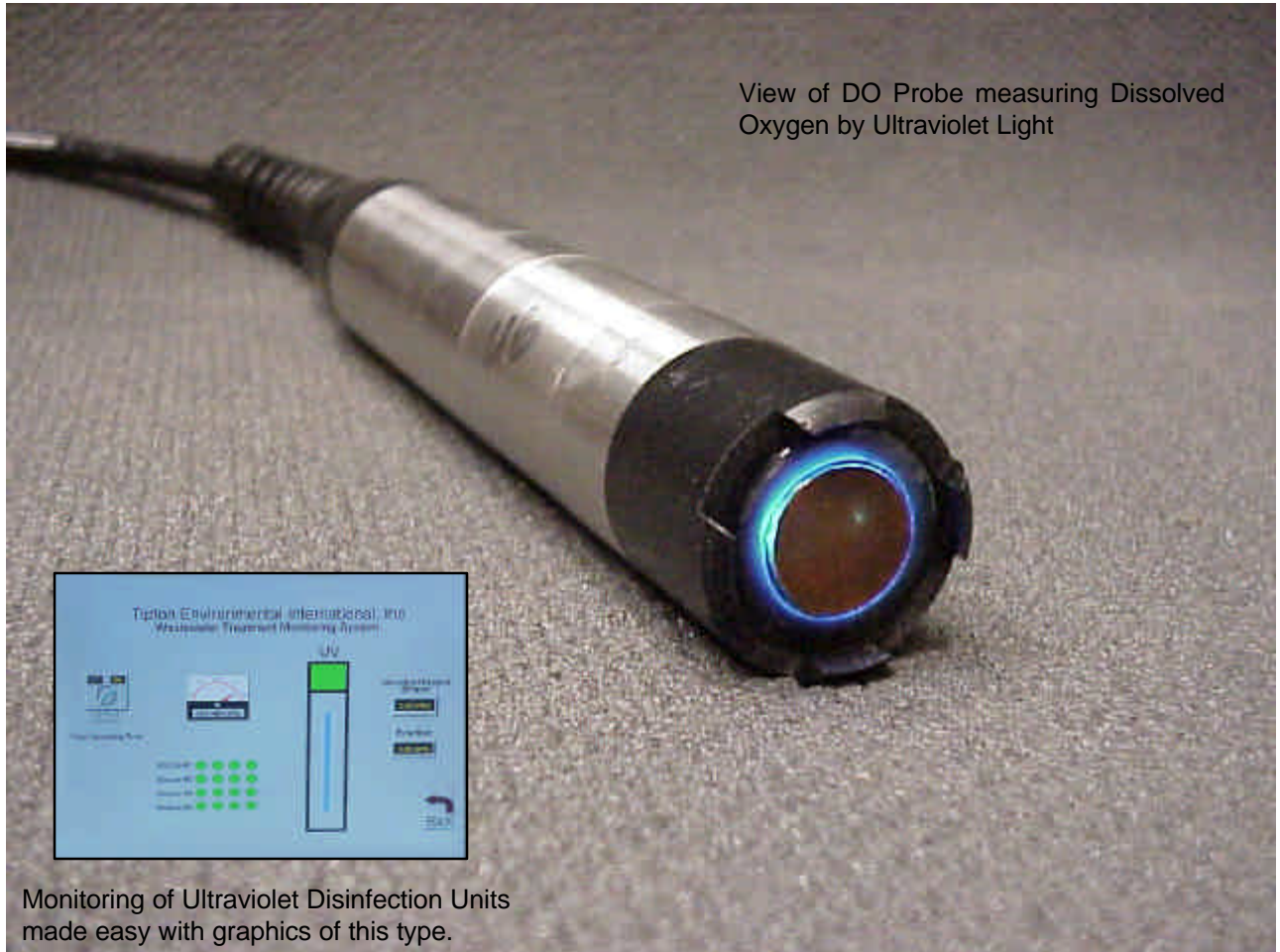
Quality Graphics & Text up to 256 colors: With our hardware graphic objects can appear as normal or with 3D shadowing. We can combine images, vector graphics and text depending on your application.

Touch screen and keypads are available and supplied, whichever is preferable for those applications.

Multi Layer Security: We offer up to 8 levels of password security allowing hierarchies of access to be established for operators, supervisors, maintenance personnel and system designers.

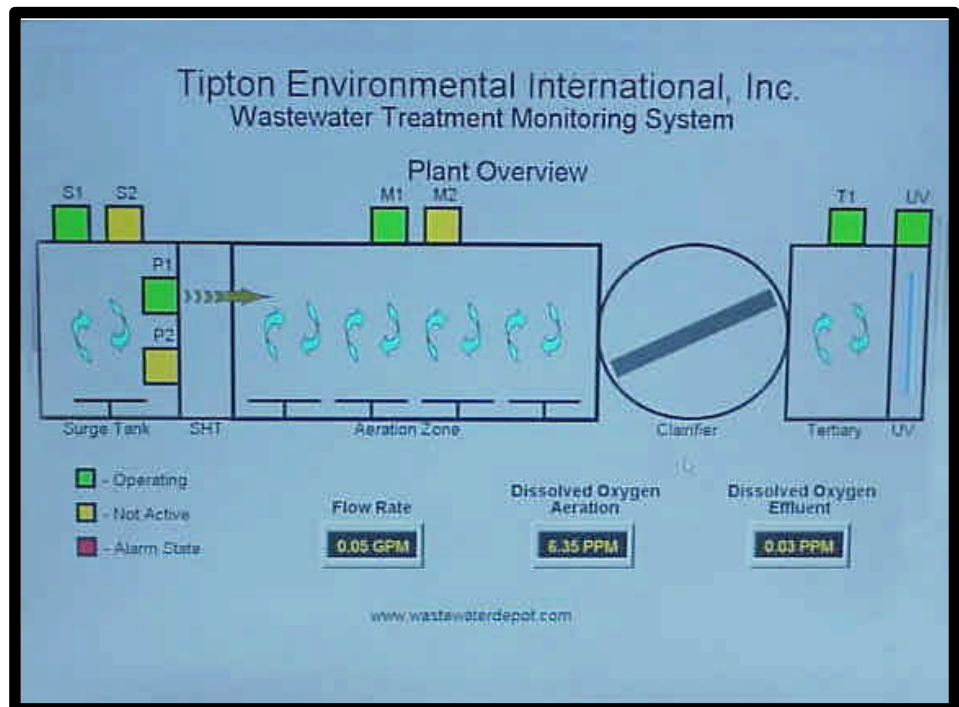


View of DO Probe measuring Dissolved Oxygen by Ultraviolet Light



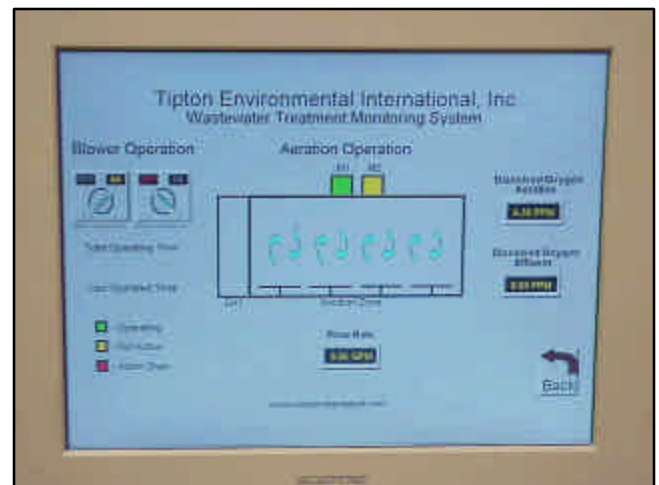
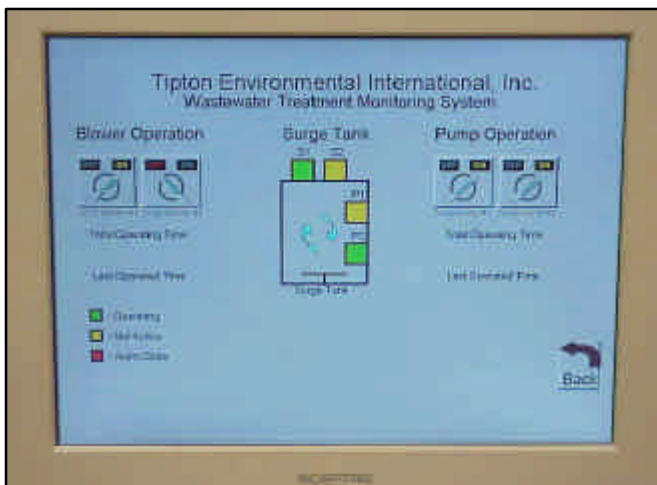
Monitoring of Ultraviolet Disinfection Units made easy with graphics of this type.

Operator's Interface: TEII offers a selection of programs in operator interfaces which are designed to be easy to use, practical in common to all of our controllers and probes. The use of simple text units and more advanced graphic display units are available for operator control and information. The graphic to the right represents a wastewater treatment system using flow equalization, sludge holding, dual blower aeration, mechanical sludge collection, tertiary filtration, ultraviolet disinfection, and flow measurement. In addition continuous dissolved oxygen control of the dual blower units and DO Monitoring and Recording of the effluent quality.



Be Informed

Our monitoring systems will allow you to monitor new and existing wastewater treatment projects worldwide. We now can establish actual real time operating conditions and data of those systems at remote locations worldwide. From this stand point you now have operating information and data available to you at all times.



Tipton Environmental *International, Inc.*
2002-G Ford Circle
Milford, OH 45150
PH: 513.248.4067 Fax: 513.248.5922
www.wastewaterdepot.com

